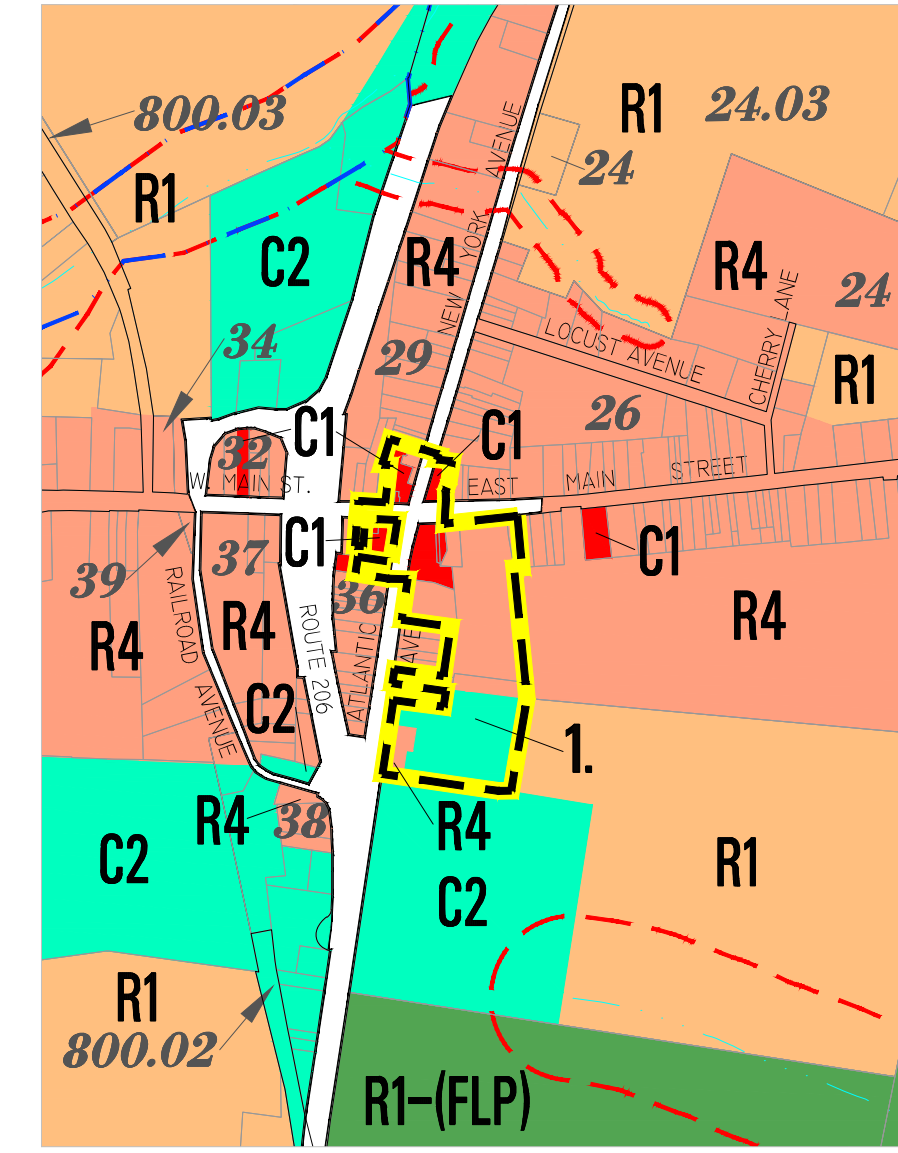
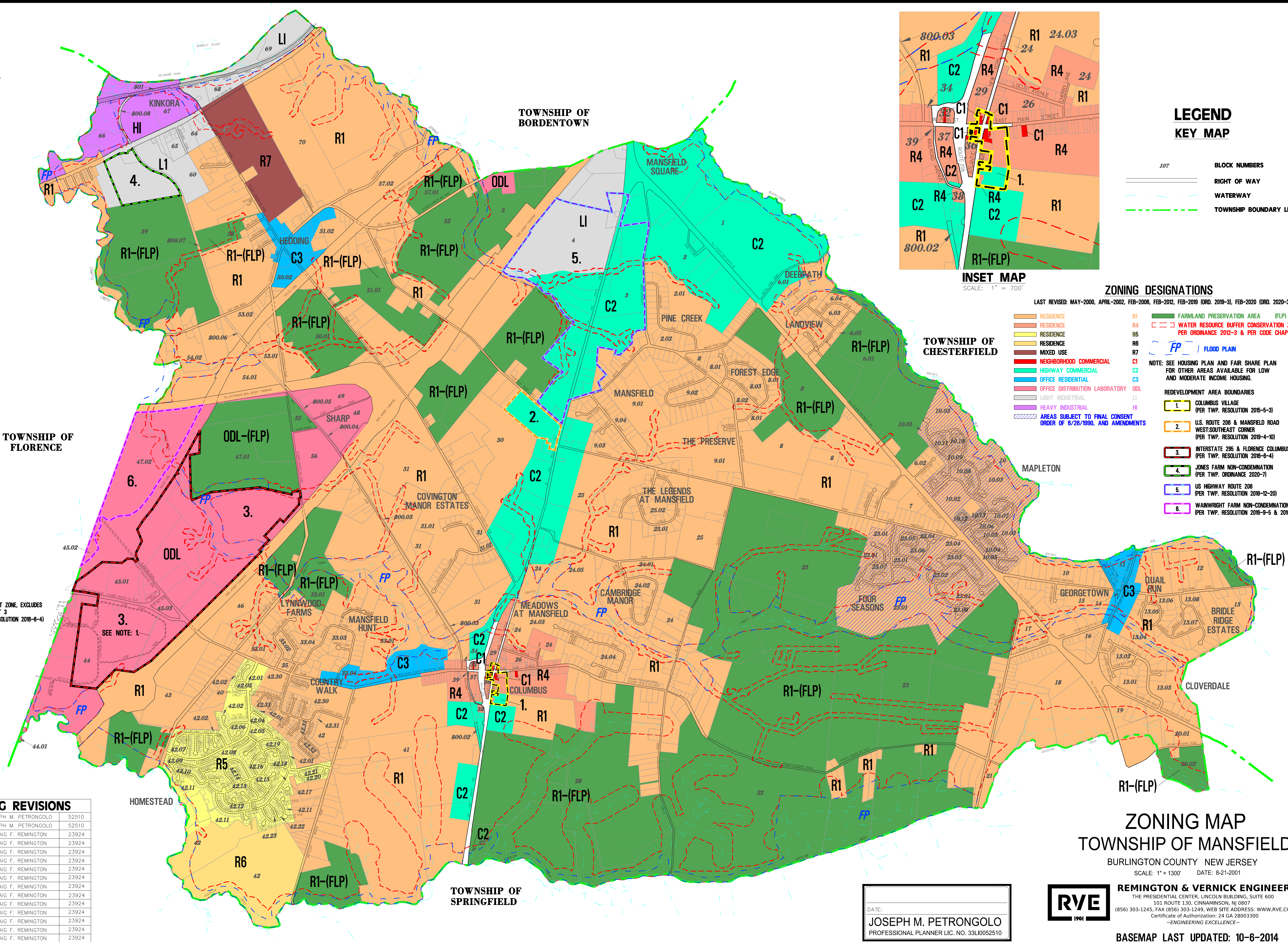


# ZONING MAP



## LEGEND KEY MAP

- BLOCK NUMBERS
- RIGHT OF WAY
- WATERWAY
- TOWNSHIP BOUNDARY LINE

## ZONING DESIGNATIONS

LAST REVISED: MAY-2000, APRIL-2002, FEB-2006, FEB-2012, FEB-2019 (ORD. 2019-3), FEB-2020 (ORD. 2020-3)

- RESIDENCE
  - RESIDENCE MEDIUM DENSITY
  - RESIDENCE SINGLE-FAMILY
  - RESIDENCE SINGLE-FAMILY TWO-UNIT
  - MIXED USE
  - NEIGHBORHOOD COMMERCIAL
  - HIGHWAY COMMERCIAL
  - OFFICE RESIDENTIAL
  - OFFICE DISTRIBUTION LABORATORY
  - LIGHT INDUSTRIAL
  - HEAVY INDUSTRIAL
  - AREAS SUBJECT TO FINAL CONSENT ORDER OF 8/28/1990, AND AMENDMENTS
  - FARMLAND PRESERVATION AREA (FLP)
  - WATER RESOURCE BUFFER CONSERVATION ZONE PER ORDINANCE 2012-3 & PER CODE CHAPTER 63A
  - FLOOD PLAN
- NOTE: SEE HOUSING PLAN AND FAIR SHARE PLAN FOR OTHER AREAS AVAILABLE FOR LOW AND MODERATE INCOME HOUSING.
- REDEVELOPMENT AREA BOUNDARIES
- 1 COLUMBUS VILLAGE (PER TWP. RESOLUTION 2016-5-3)
  - 2 U.S. ROUTE 206 & MANSFIELD ROAD WEST/SOUTHEAST CORNER (PER TWP. RESOLUTION 2018-4-10)
  - 3 INTERSTATE 295 & FLORENCE COMMERCE RD. (PER TWP. RESOLUTION 2018-6-4)
  - 4 JONES FARM NON-CONDEMNATION (PER TWP. ORDINANCE 2020-7)
  - 5 US HIGHWAY ROUTE 206 (PER TWP. RESOLUTION 2018-12-20)
  - 6 WANNWRIGHT FARM NON-CONDEMNATION (PER TWP. RESOLUTION 2016-9-5 & 2016-9-15)

NOTE 1  
REDEVELOPMENT ZONE, EXCLUDES  
BLOCK 44, LOT 3  
(PER TWP. RESOLUTION 2018-6-4)

### ZONING REVISIONS

DATE	APPROVED BY	RESOLUTION NUMBER
4-3-2020	JOSEPH M. PETRONGOLO	52510
2-1-2019	JOSEPH M. PETRONGOLO	52510
2-13-2012	CRAIG F. REMINGTON	23924
11-15-2011	CRAIG F. REMINGTON	23924
4-1-2008	CRAIG F. REMINGTON	23924
2-22-2006	CRAIG F. REMINGTON	23924
12-9-2002	CRAIG F. REMINGTON	23924
8-27-2002	CRAIG F. REMINGTON	23924
7-19-2002	CRAIG F. REMINGTON	23924
7-8-2002	CRAIG F. REMINGTON	23924
5-31-2002	CRAIG F. REMINGTON	23924
1-25-2002	CRAIG F. REMINGTON	23924
11-29-2001	CRAIG F. REMINGTON	23924
11-16-2001	CRAIG F. REMINGTON	23924
8-21-2001	CRAIG F. REMINGTON	23924

## ZONING MAP TOWNSHIP OF MANSFIELD

BURLINGTON COUNTY NEW JERSEY  
SCALE: 1" = 1300' DATE: 8-21-2001



**REMINGTON & VERNICK ENGINEERS**  
THE PRESIDENTIAL CENTER, LINCOLN BUILDING, SUITE 600  
101 ROUTE 130, CINNAMINSON, NJ 0807  
(856) 303-1245, FAX (856) 303-1249, WEB SITE ADDRESS: WWW.RVE.COM  
Certificate of Authorization: 24 GA 28003300  
-ENGINEERING EXCELLENCE-

DATE:  
**JOSEPH M. PETRONGOLO**  
PROFESSIONAL PLANNER LIC. NO. 33LI0052510

BASEMAP LAST UPDATED: 10-6-2014

# ZONING MAP